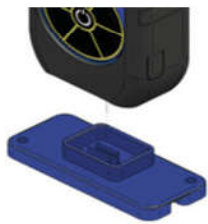


**model**  
Ranger



Ruggedized boot and Stand included



## Features:

- Backlit Graphic LCD with Backlight
- Count Light-Red LED flashes with each radiation event
- Audio Indicator-Internally mounted beeper (can be switched off for silent operation)
- Anit-Saturation-Readout will hold at full scale in radiation fields as high as 100 times the maximum reading.
- Requires 2 AA alkaline batteries
- Includes carrying case, Extreme Boot, Stand, Mini-USB cable, Observer USB Software download, Certificate of Conformance
- Optionals: Wipe Test Plate, Swipes, NIST Calibration
- Limited 1 year warranty



## Ranger Radiation Alert

The Ranger offers maximum performance in a light-weight, rugged nuclear radiation detector for surveying at the facility or in the field. The Ranger has been designed for industrial environments, but it still has all of the features you've come to love in the lab. It's small, handheld, digital and offers excellent sensitivity to low levels of alpha, beta, gamma, and x-rays.

This model has built in efficiencies for common isotopes to calculate activity in Bq and DPM. It has a backlit digital display, a red count light, and a beeper that sounds with each count detected. Other features include selectable alert levels, an adjustable timer, and an optional wipe test plate for swipes. Internal memory and the free Observer USB Software allow you to download your data, and set computer alarms.

Operating Range  
 mR/hr – .001 (1µR) to 100  
 CPM – 0 to 350,000  
 µSv/hr – .01 to 1000  
 CPS – 0 to 5000  
 Total Counts- 1 to 9,999,000 counts

Accuracy (Referenced to Cs137) Typically ±15% from factory, ±10% with NIST Source Calibration

Energy Sensitivity-Detects Alpha down to 2 MeV. Detects Beta down to .16 MeV; typical detection efficiency at 1 MeV is approx. 25%. Detects Gamma down to 10 KeV through the detector window. 3340 CPM/mR/hr (137Cs). Smallest detectable level for 125I is .02 µCi at contact.

Built-In Efficiencies  
 Sulfur (35S), Strontium (90Sr/y), Cesium (137Cs), Phosphorus (32P), Carbon (14C), Iodine (131I), Cobalt (60Co), and Alpha

Selectable Alert Set Range  
 mR/hr .001 – 100 and CPM 1 – 350,000. Pulsating beeper sounds the alert. Adjustable alert levels are used for mR/hr / CPM, and µSv/hr / CPS. 70db @ 1m. Alarm will sound when in Timer Mode when set alarm threshold is reached.

Display updates every 3 seconds. At low background levels, the update is the average for the past 30-second time period. The timed period for the average decreases as the radiation level increases. 90Sr/y), Cesium (137Cs), Phosphorus (32P), Carbon (14C), Iodine (131I), Cobalt (60Co), and Alpha