

**The Sentry**  
model SE-SENTRY



## Features:

- Detector: Energy Compensated GM Tube
- Dose Rate Linearity: Better than  $\pm 15\%$  up to 15 R
- Energy Response: Down to 20 KeV
- Accuracy: Typically  $\pm 15\%$  of reading (Cs137)
- Gamma Sensitivity: 1.5 cps/mR/hr (Co60)
- Switch Functions: Power, Vibrate & Audible Alert, Silent Vibrating Only Alert, and Audio Clicks On/Off.
- Operating Range: Dose Rate: 0.1 - 15 R/hr
- Accumulated Dose: 0.1 - 65 R
- Audible Alarms: Accumulated Dose & Dose Rate, 90db @ 1 ft.
- Alarm Thresholds: Default: Dose 500 mR / Rate 50 mR/hr
- Sievert Option: Dose 5000  $\mu\text{Sv}$  / Rate 500  $\mu\text{Sv/hr}$
- Alarm and warning levels are user selectable with the optional SentryCom Software.
- Power Requirements: 9-Volt Alkaline Battery Approx. 1500 hrs at normal background.
- Enclosure: Alodized Aluminum Housing w/ Metal Belt Clip
- Outputs: Mini-USB
- Temperature Range:  $-20^{\circ}$  -  $+50^{\circ}\text{C}$  ( $-4^{\circ}$  -  $+122^{\circ}\text{F}$ )
- Weight: 243 g (8.6 oz)
- Size: 106 x 67 x 28 mm (4.2 X 2.7 X 1.1 in)
- Limited Warranty: 1 year limited



## The Radiation Alert® Sentry EC

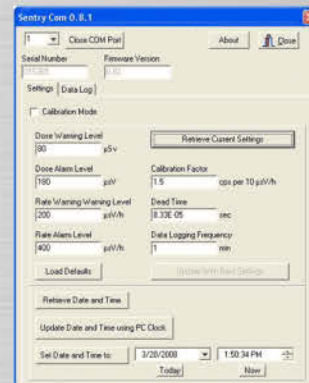
Personal Alarming Dosimeter and Rate Meter

The Sentry is a Personal Alarming Dosimeter/Ratemeter designed to ensure the safety of personnel that work in occupations with potential x-ray or gamma exposure. The pocket-sized unit has an energy compensated tube for a linear response to gamma and built-in memory for recording data points for tracking accumulated exposure.

The Sentry Com Software option enables you to generate incident reconstruction for analysis. The software also permits you to easily set the vibrating and audio alert to your desired levels for dose and dose rate. Use the audio switch to choose between audible clicks with each count received or a discreet silent mode.

## Sentry Com Software with Cable

The optional Sentry Com Software enables you to set the values for dose and dose rate alarms and warnings, set the Cal Factor, and the data logging frequency. It also allows the user to download the accumulated dose data for analysis.



## Sentry Com Software

model SE-SENTRYSOFTWARE